

Managing confirmed or suspected COVID-19 at school*

What to do if a student has:

COVID-19 symptoms

Confirmed COVID-19 (positive test)

Close contact with a COVID-19 case

Has the student had close contact with a person who has COVID-19?

••YES••



Send home. Isolate and get tested (if not tested already) even if fully vaccinated or previously infected.

See Page 2

NO

Does the student have documentation from a healthcare provider (HCP) for an underlying chronic health condition that matches their symptoms **OR** a negative SARS-CoV-2 test **OR** an HCP confirmed alternate diagnosis?

YES

Non-COVID-19 illness. Follow guidelines below for alternate diagnoses.

NO

Send home. Isolate and get tested (if not tested already) even if fully vaccinated or previously infected.

Positive or no test: Stay home in isolation and exclude from in-person instruction for at least 10 days from symptom onset (or from test date if no symptoms). Isolation can end after 10 days **IF** fever-free (without using fever-reducing medication) for at least the previous 24 hours **AND** other symptoms improving.

Negative test or alternate diagnosis (with no previous positive test): May return to in-person instruction if fever-free (without using fever-reducing medication) for at least the previous 24 hours **AND** other symptoms improving.

*For more detailed information and guidelines, see [CDPH Schools Guidance](#) and [CDPH Isolation & Quarantine Guidance](#).

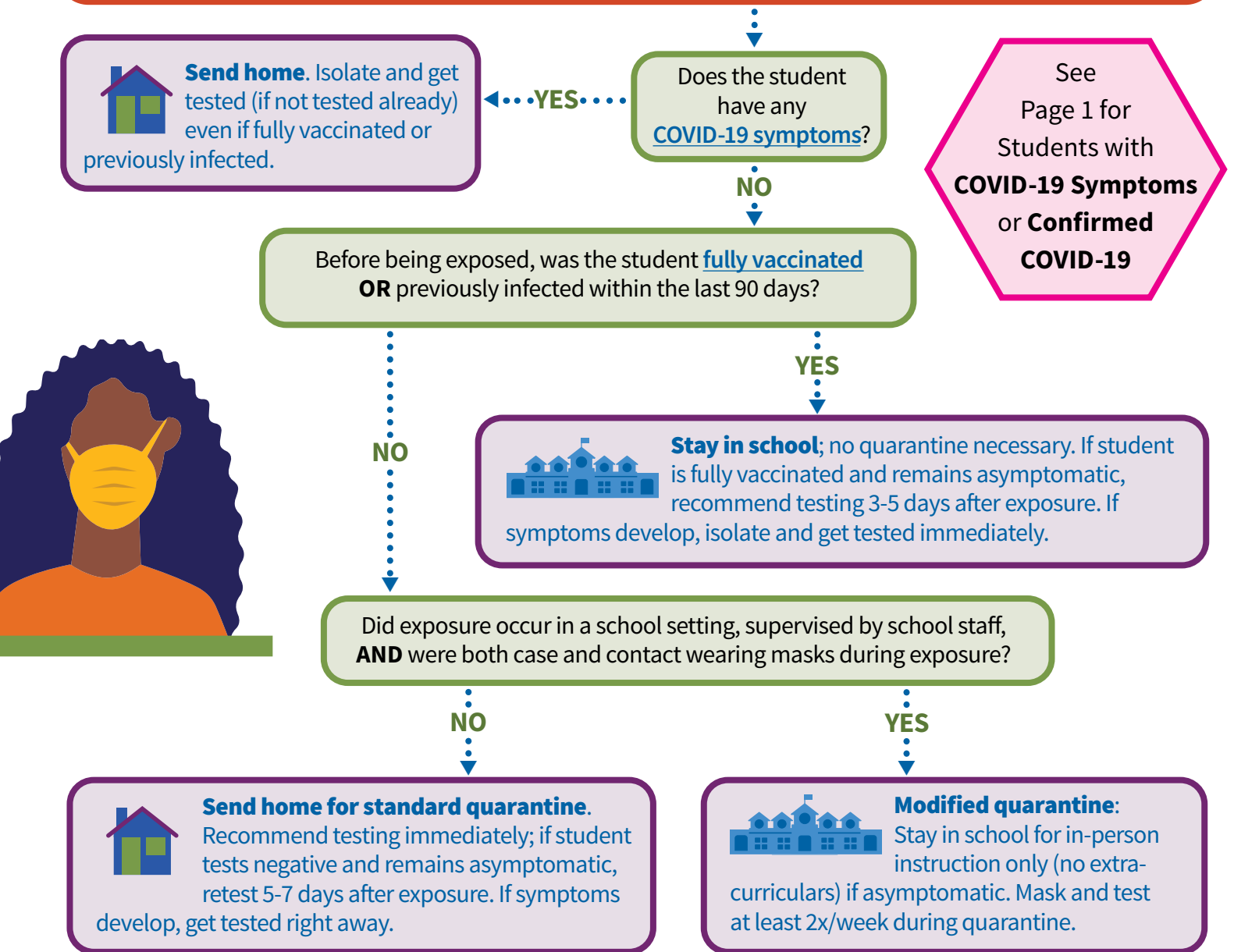
Staff and employers are subject to Cal/OSHA [COVID-19 ETS](#) or [Aerosol Transmissible Diseases](#) standard and should review those requirements.

If school staff require additional guidance, please reach out to your San Bernardino County School Response Team Investigator or email SRT@DPH.SBCOUNTY.GOV.



Managing COVID-19 exposure at school

What to do if a student is a close contact of someone with COVID-19



Positive test: Stay home in isolation and exclude from in-person instruction for at least 10 days from symptom onset (or from test date if no symptoms). Isolation can end after 10 days **IF** fever-free (without using fever-reducing medication) for at least the previous 24 hours **AND** other symptoms improving.

Negative or no test: Standard or modified quarantine can end after day 10 following last exposure if student remains asymptomatic.* Quarantine can end after day 7 following last exposure if the student remains asymptomatic and tests negative on day 5 or later.*

*Continue monitoring for symptoms and following all [recommended preventative measures](#) through day 14 (masking, hand washing, avoiding crowds, etc). Isolate and get tested if symptoms develop.

Staff and employers are subject to Cal/OSHA [COVID-19 ETS](#) or [Aerosol Transmissible Diseases](#) standard and should review those requirements.